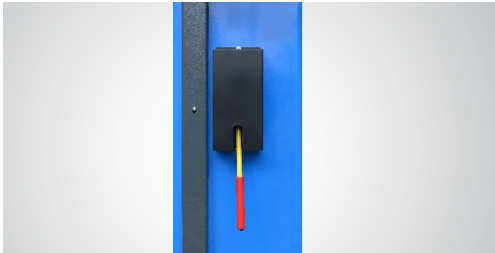




PEAK's newly designed single post lift is the perfect choice for quickly lifting a vehicle. It can be used in commercial service shops, home garage, or areas where it will take up less



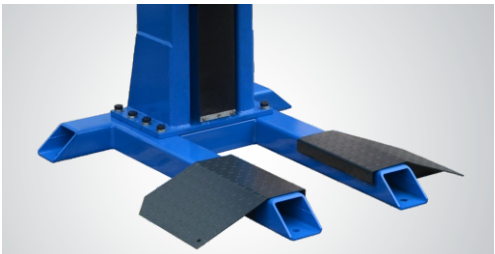
▲ The chain protection cover prevents the chain from slipping off.



▲ A manual locking safety release device controls the double locks.



▲ Arm locking device with easy to release handles.



▲ Adjustable portable ramps with free installation.



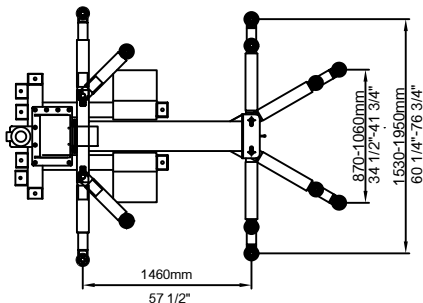
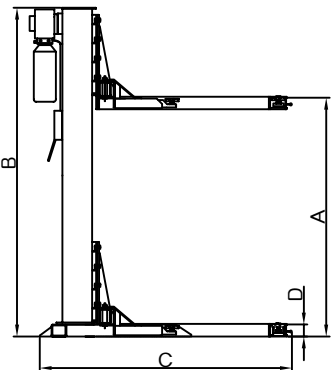
▲ The safety stop device at the height of 300mm with tone alarm for safety.



▲ Features insert and screw rubber pads.

FEATURES

- 3000kg (7,000lbs) capacity.
- Max. lifting height: 1971mm (77 5/8")
- Min height: 110mm (4 3/8")
- Self-lubricating UHMW Polyethylene sliders and a self-lubricating bronze bush.
- High quality cylinders and power units are manufactured by high standards.
- Warranty: 5 years: steel structured components.
2 years: hydraulic parts and bronze bush.
1 years: electrical components and cable.



SPECIFICATIONS

Model	Lifting Capacity	Lifting Time	A	B	C	D	Motor	Gross Weight
			Lifting Height	Overall Height	Overall Width	Minimum pad Height		
SL-3000	3.0T (7,000lbs)	32 Seconds	1825~1971mm (71 7/8"~77 5/8")	2766mm (108 7/8")	2146mm (84 1/2")	110mm (4 3/8")	3.0HP	679kg (1,497lbs)