

# MODEL 409A

Alignment Four-post Lift

<http://www.peaklift.cn>

# MODEL 409A

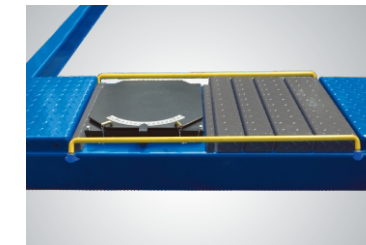
Alignment Four-post Lift

PEAK<sup>®</sup> Lift



### EXCLUSIVE FEATURE !

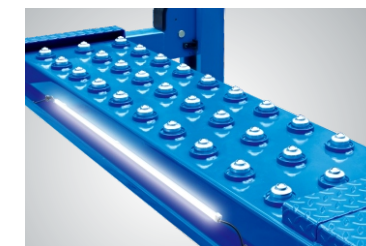
Electric control device With **UP**, **LOCK** and **DOWN** buttons  
With C.E. stop switch at 300 mm from ground and alarm tone when lowering down from 300 mm to ground make the lift more safety.



**Optional Turnplate**  
Adjustable turnplate blocks to fit various wheel bases vehicles.  
Kits No.:40101



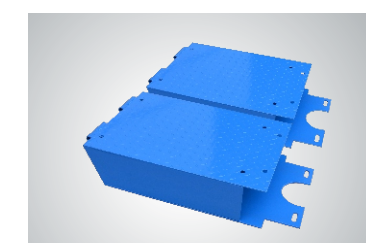
Oil-water separator and Solenoid air valve are installed on the power side column.



The 4-post LED Light kits is fitted for every model of PEAK 4-post lifts .  
Kits No.:40104



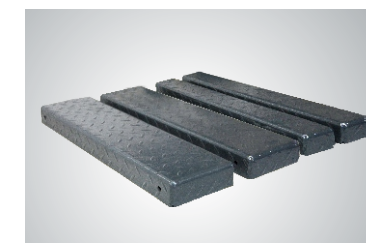
**Optional Air Line Kits**  
All peak four post lifts are designed to use the air line kits for rolling jack.  
Kits No.:40102



Optional platform extension kits add an extra 660mm(26") length to the platform.  
Kits No.:40903



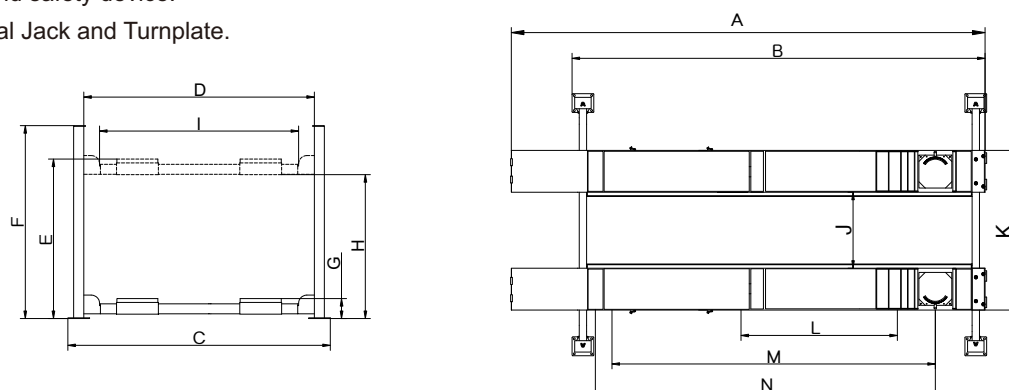
**Optional Rolling Jacks**  
J6H: manual hydraulic type 2.8 T  
J6A: pneumatic hydraulic type 2.8 T  
RJ - 8A: pneumatic hydraulic type 3.5 T



Optional adjustable blocks for alignment 4 post lift.  
Kits No.:40905  
(used with kits 40903 or 41203)

## FEATURES

- Electric-air control operation system.
- Mechanical self-lock and air-driven safety release.
- Electrical hydraulic power system, cable-driven.
- Skid proof diamond platform.
- Adjustable turntable positions to fit the different wheel base.
- Adjustable lifting platform: Off-side platform can be adjusts the mounting position left or right as required. The standard distance between two platforms is 1100mm and maximum distance is 1300mm.
- Dual safety device: In case the primary safety locks are out of operation, the lift would also be locked automatically by a second safety device.
- Optional Jack and Turnplate.



## SPECIFICATIONS

Model	Lifting Capacity	Lifting Time	A Overall Length (Inc.Ramps)	B Overall Length (No Inc.Ramps)	C Overall Width	D Width Between Posts	E Max. Lifting Height	F Overall Height	G Minimum Height	H Max. Underneath Height	I Drive-Thru Clearance	J Width Between Runways	K Outside Edge of Runways	L Min. Four Wheel Align	M Max. Four Wheel Align	N Max.Two Wheel Align	Gross Weight	Motor Power
409A	4.0T (9,000lbs)	45S	5512mm (217")	4600mm (181 1/8")	3208mm (126 1/4")	2852mm (112 1/4")	1915mm (75" 3/8")	2185mm (86")	220mm (8 5/8")	1724mm (67 7/8")	2498mm (98 3/8")	1100mm(43 1/4") Max.1300mm (51 1/8")	2116mm(83 1/4") Max.2316mm (91 1/8")	2000mm (78 3/4")	3460mm (136 1/4")	3600mm (141 3/4")	1147kg (2,528lbs)	3.0HP