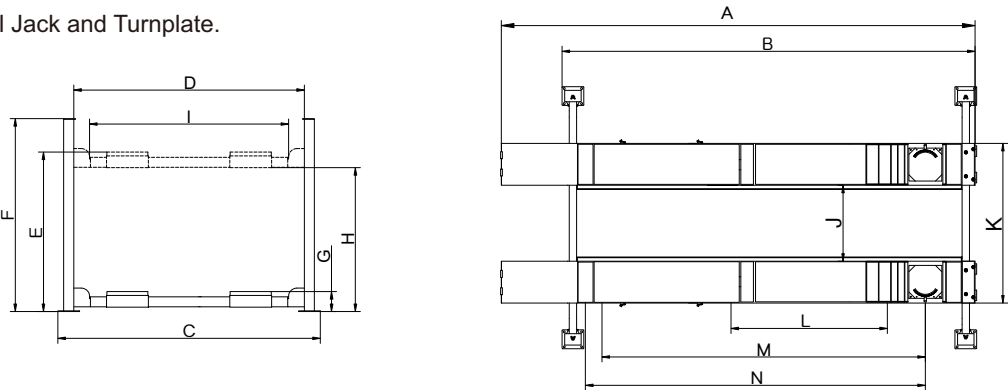




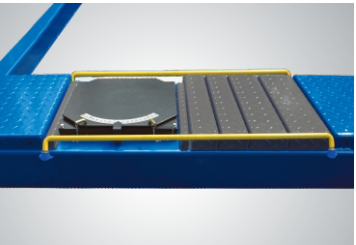
FEATURES

- Electric-air control operation system.
- Mechanical self-lock and air-driven safety release.
- Electrical hydraulic power system, cable-driven.
- Skid proof diamond platform.
- Adjustable turntable positions to fit the different wheel base.
- Adjustable lifting platform: Off-side platform can be adjusts the mounting position left or right as required. The standard distance between two platforms is 1100mm and maximum distance is 1300mm.
- Dual safety device: In case the primary safety locks are out of operation, the lift would also be locked automatically by a second safety device.
- Optional Jack and Turnplate.



EXCLUSIVE FEATURE !

Electric control device With **UP**, **LOCK** and **DOWN** buttons
With C.E. stop switch at 300 mm from ground and alarm tone when lowering down from 300 mm to ground make the lift more safety.



Optional Turnplate
Adjustable turnplate blocks to fit various wheel bases vehicles.
Kits No.:40101



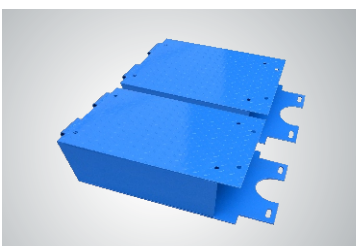
Oil-water separator and Solenoid air valve are installed on the power side column.



The 4-post LED Light kits is fitted for every model of PEAK 4-post lifts .
Kits No.:40104



Optional Air Line Kits
All peak four post lifts are designed to use the air line kits for rolling jack.
Kits No.:40102



Optional platform extension kits add an extra 660mm(26") length to the platform.
Kits No.:40903



Optional Rolling Jacks

J6H: manual hydraulic type 2.8 T
J6A: pneumatic hydraulic type 2.8 T
RJ - 8A: pneumatic hydraulic type 3.5 T



Optional adjustable blocks for alignment 4 post lift.
Kits No.:40905
(used with kits 40903 or 41203)

SPECIFICATIONS

Model	Lifting Capacity	Lifting Time	A Overall Length (Inc.Ramps)	B Overall Length (No Inc.Ramps)	C Overall Width	D Width Between Posts	E Max. Lifting Height	F Overall Height	G Minimum Height	H Max. Underneath Height	I Drive-Thru Clearance	J Width Between Runways	K Outside Edge of Runways	L Min. Four Wheel Align	M Max. Four Wheel Align	N Max.Two Wheel Align	Gross Weight	Motor Power
410A	4.5T (10,000lbs)	45S	5910mm (232 5/8")	4998mm (196 3/4")	3356mm (132 1/8")	3000mm (118 1/8")	1915mm (75" 3/8")	2185mm (86")	220mm (8 5/8")	1724mm (67 7/8")	2646mm (104 1/8")	1100mm(43 1/4") Max.1365mm (53 3/4")	2116mm(83 1/4") Max.2381mm (93 3/4")	2080mm (81 7/8")	3850mm (151 5/8")	4000mm (157 1/2")	1282kg (2,826lbs)	3.0HP