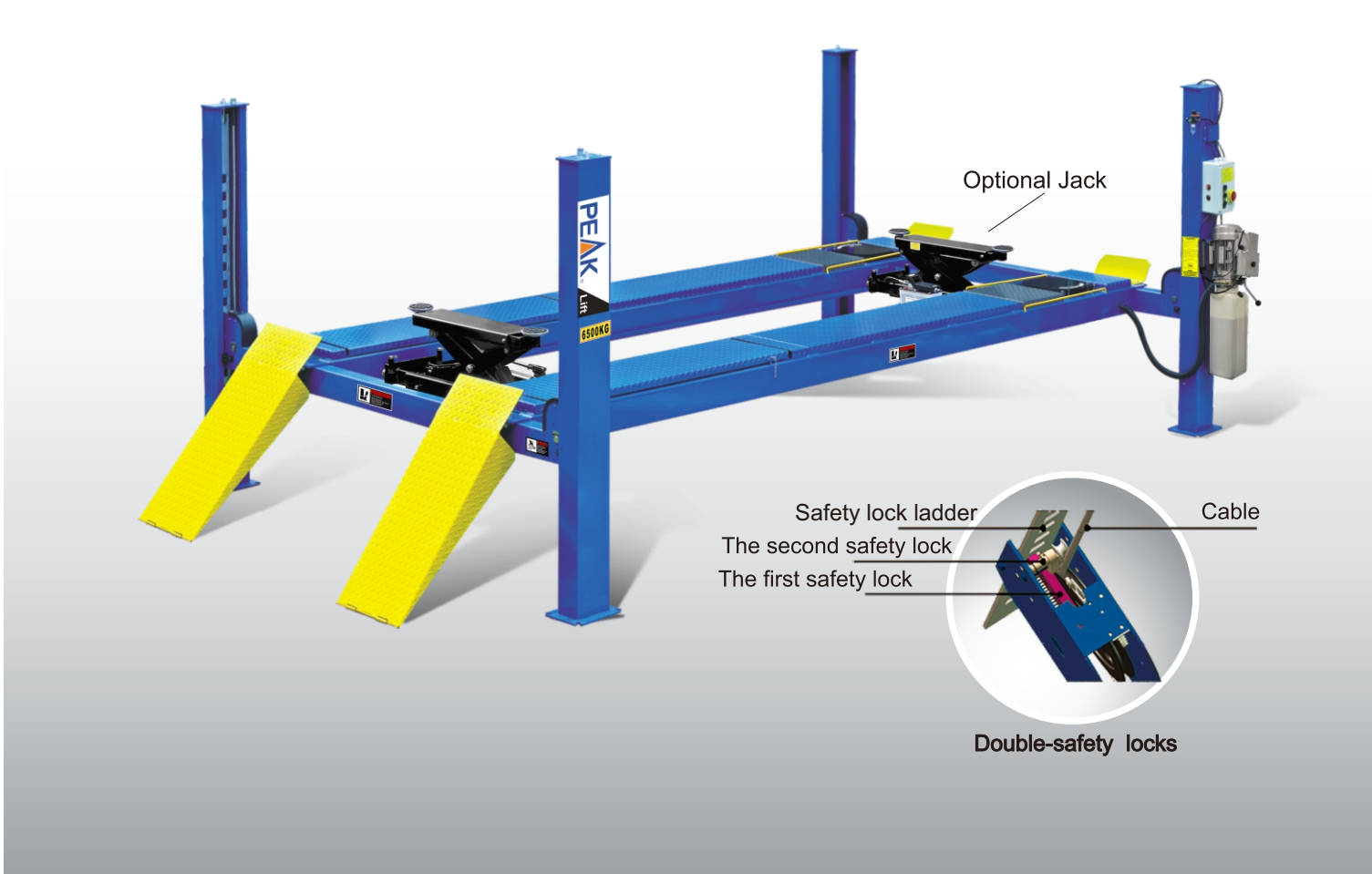


MODEL 414A 414AE
Alignment Four-post Lift

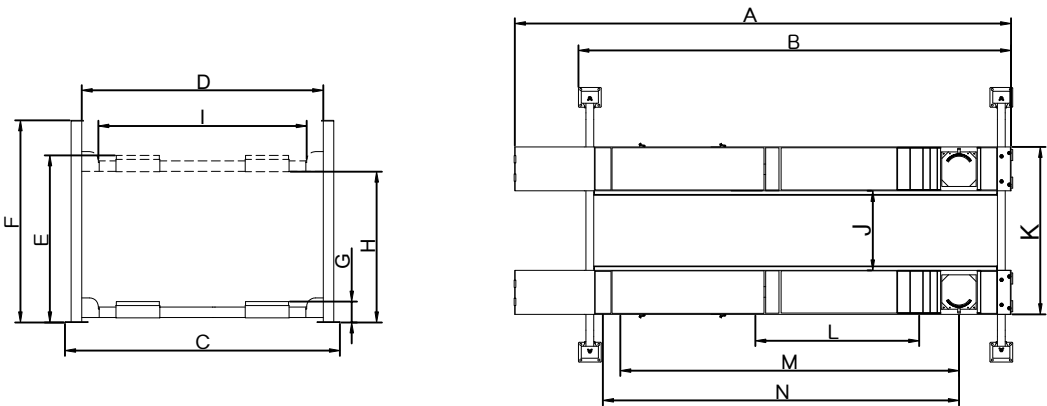
<http://www.peaklift.cn>

MODEL 414A 414AE
Alignment Four-post Lift



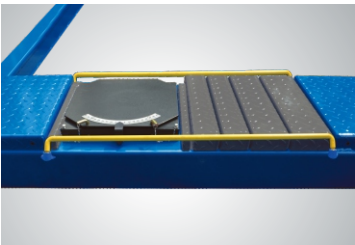
FEATURES

- Electric-air control operation system.
- Mechanical self-lock and air-driven safety release.
- Electrical hydraulic power system, cable-driven.
- Skid proof diamond platform.
- Two adjustable turntable positions to accommodate different wheel base
- Adjustable lifting platform: Off-side platform can be adjusts the mounting position left or right as required. The standard distance between two platforms is 1194mm and maximum distance is 1385mm; Only be (414A 414AE).
- Dual safety device: In case the primary safety locks are out of operation, the lift would also be locked automatically by a second safety device.

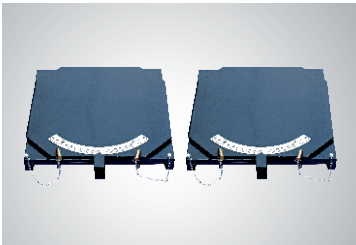


EXCLUSIVE FEATURE !

Electric control device With **UP**, **LOCK** and **DOWN** buttons
With C.E. stop switch at 300 mm from ground and alarm tone when lowering down from 300 mm to ground make the lift more safety.



Adjustable turnplate blocks to fit various wheel bases vehicles.



Optional Turnplate
Each alignment lift need one set (two pcs.) of turnplates

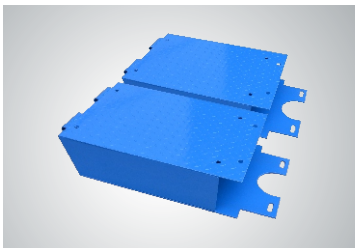
kits No. :40101



The 4-post LED Light kits is fitted for every model of PEAK 4-post lifts .
Kits No.:40104



Optional Air Line Kits
All peak four post lifts are designed to use the air line kits for rolling jack.
Kits No.:40102(414/414A /414AE/418/418A)



Optional platform extension kit add 660mm/26" extra length to the platform.
Kits No.:41403



Optional adjustable blocks for alignment 4 post lift.
Kits No.: 40905
(used with kits 41403)



Optional Rolling Jacks
J6H: manual hydraulic type 2.8 T
J6A: pneumatic hydraulic type 2.8 T
RJ - 8A: pneumatic hydraulic type 3.5 T
RJ-10A:pneumatic hydraulic type 4.5T

SPECIFICATIONS

Model	Lifting Capacity	Lifting Time	A	B	C	D	E	F	G	H	I	J	K	L	M	N	Gross Weight	Motor Power
			Overall Length (Inc.Ramps)	Overall Length (No Inc.Ramps)	Overall Width	Width Between Posts	Max. Lifting Height	Overall Height	Minimum Height	Max. Underneath Height	Drive-Thru Clearance	Width Between Runways	Outside Edge of Runways	Min. Four Wheel Align	Max. Four Wheel Align	Max.Two Wheel Align		
414A	6.5T (14,000lbs)	76S	6528mm (257")	5500mm (216 1/2")	3324mm (130 7/8")	2946mm (116")	1915mm (75 3/8")	2185mm (86")	250mm (9 7/8")	1695mm (66 3/4")	2592mm (102 1/8")	1194mm(47") Max.1385mm (54 1/2")	2210mm(87") Max.2401mm (94 1/2")	2350mm (92 1/2")	4310mm (169 5/8")	4450mm (175 1/4")	1550kg (3,417lbs)	4.0HP
414AE	6.5T (14,000lbs)	81S	7252mm (285 1/2")	6224mm (245")	3324mm (130 7/8")	2946mm (116")	1915mm (75 3/8")	2185mm (86")	250mm (9 7/8")	1695mm (66 3/4")	2592mm (102 1/8")	1194mm(47") Max.1385mm (54 1/2")	2210mm(87") Max.2401mm (94 1/2")	2350mm (92 1/2")	4310mm (169 5/8")	5170mm (203 1/2")	1655kg (3,649lbs)	4.0HP