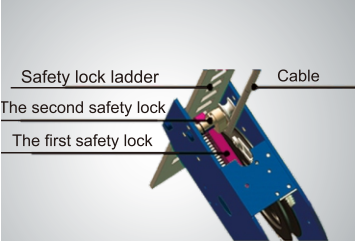


EXCLUSIVE FEATURE !

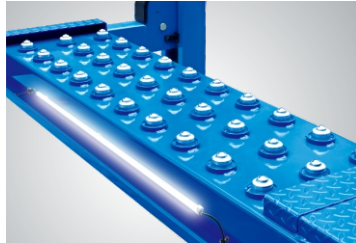
Electric control device With **UP**, **LOCK** and **DOWN** buttons
With C.E. stop switch at 300 mm from ground and alarm tone when lowering down from 300 mm to ground make the lift more safety.



Double-safety locks.



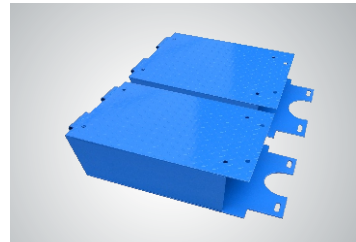
Oil-water separator and Solenoid air valve are installed on the power side column.



The 4-post LED Light kits is fitted for every model of PEAK 4-post lifts .
Kits No.:40104



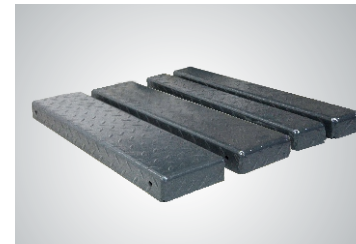
Optional Air Line Kits
All peak four post lifts are designed to use the air line kits for rolling jack.
Kits No.:40102



Optional platform extension kits add an extra 660mm(26") length to the platform.
Kits No.:41203



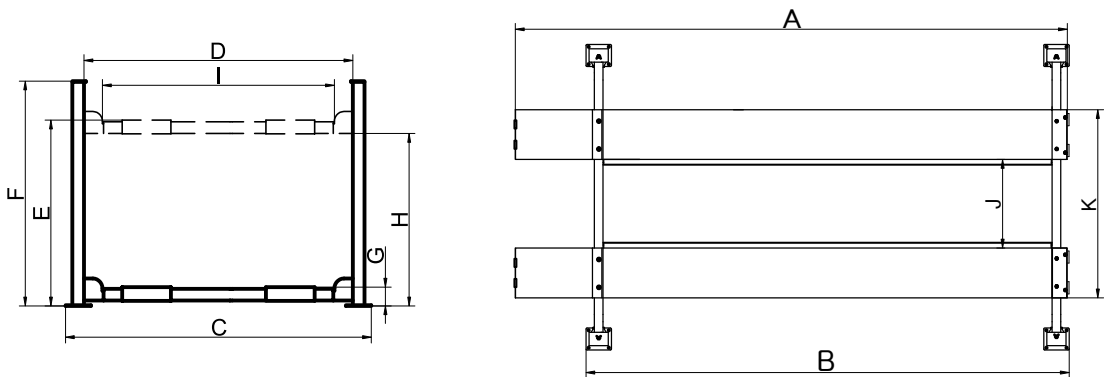
Optional Rolling Jacks
J6H: manual hydraulic type 2.8 T
J6A: pneumatic hydraulic type 2.8 T
RJ - 8A: pneumatic hydraulic type 3.5 T



Optional adjustable blocks for alignment 4 post lift.
Kits No.:40905
(used with kits 40903 or 41203)

FEATURES

- Electric-air control operation system.
- Mechanical self-lock and air-driven safety release.
- Electrical hydraulic power system, cable-driven.
- Non-skid diamond platform.
- Adjustable lifting platform: Off-side platform can be adjusts the mounting position left or right as required. The standard distance between two platforms is 1100mm and maximum distance is 1300mm.
- Dual safety device: In case the primary safety locks are out of operation, the lift would also be locked automatically by a second safety device.
- Optional Jack.



SPECIFICATIONS

Model	Lifting Capacity	Lifting Time	A	B	C	D	E	F	G	H	I	J	K	Gross Weight	Motor Power
			Overall Length (Inc.Ramps)	Overall Length (No Inc.Ramps)	Overall Width	Width Between Posts	Max. Lifting Height	Overall Height	Minimum Height	Max. Underneath Height	Drive-Thru Clearance	Width Between Runways	Outside Edge of Runways		
412	5.5T (12,000lbs)	63S	6012mm (236 5/8")	5100mm (200 3/4")	3208mm (126 1/4")	2852mm (112 1/4")	1865mm (73 1/2")	2185mm (86")	170mm (6 5/8")	1724mm (67 7/8")	2498mm (98 3/8")	1100mm(43 1/4") Max.1300mm (51 1/8")	2116mm(83 1/4") Max.2316mm (91 1/8")	1070kg (2,359lbs)	4.0HP