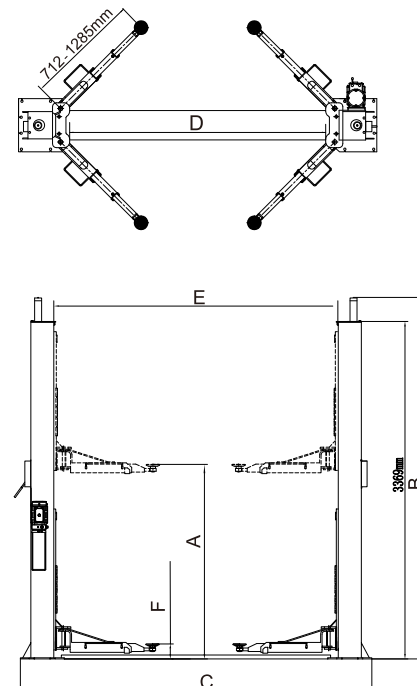




FEATURES

- 10,000 Lb. Capacity.
- Dual hydraulic direct-driven cylinders, designed and made on high standard, high quality seals.
- 4 three-stages arms are suitable for more vehicles.
- 3/8" aircraft quality cable is used for synchronization.
- Self-lubricating UHMW Polyethylene sliders and bronze bush.
- Single-point safety release, and dual safety design.
- Automatic arms restraints.
- Stackable adapters 1.5", 2.5", 5" as standard.
- Detachable foot guard and tool tray.

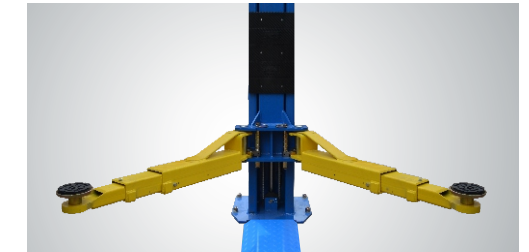


PROFESSIONAL LINE OF TWO POST LIFTS

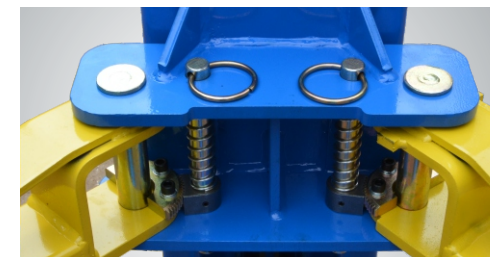
How to make a perfect products ? It is our dream and goal day by day, year by year... With extremely long carriages, direct-driven hydraulic system, strong and simplified design, PEAK professional line two post lifts model 210, are expected to be more longevity, more reliable and less service.



- ▲ Single Point Lock Release Lever . This Lever Release Locking Mechanisms In Both Columns From One Column.



- ▲ **EXCLUSIVE FEATURE !**
4 three-stages arms are suitable for more vehicles.



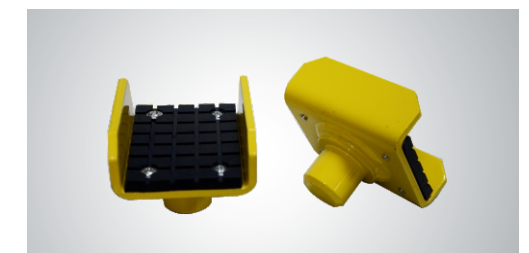
- ▲ Automatic arm restraints.



- ▲ The stackable rubber pads assembly with 1.5", 2.5", 5" extension adapters.



- ▲ Optional 24V LED lights for clear floor
2-post lifts:
Kits 21102 plus extension cable 201128



- ▲ The Optional Saddle adapter.
Kits No. for light truck:20802
Kits No. for heavy-duty truck:21103

SPECIFICATIONS

Model	Style	Lifting Capacity	Lifting Time	A	B	C	D	E	F	Gross Weight	Motor
				Lifting Height	Overall Height	Overall Width	Drive-Thru Clearance	Width Between Columns	Minimum Pad Height		
210	Floorplate Direct-driven	4.5 T (10,000 lbs.)	61 Seconds	1890-2119mm (74 3/8" - 83 3/8")	3604mm (141 7/8")	3516mm (138 3/8")	2560mm (100 3/4")	2850mm (112 1/4")	90mm (3 1/2")	778kg (1,715lbs)	3.0HP