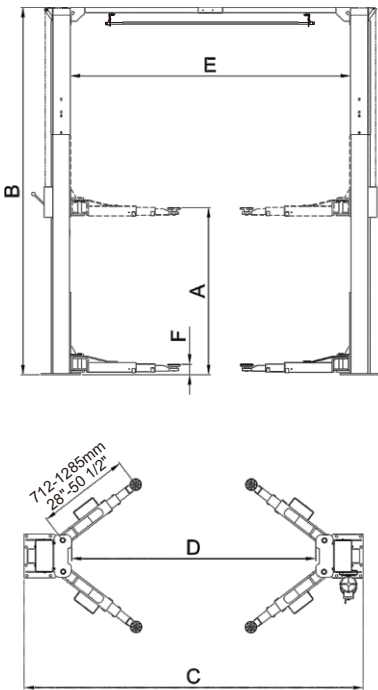




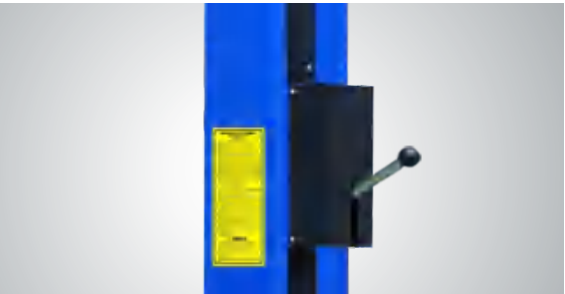
FEATURES

- 4000kg (9,000lbs) capacity.
- Dual hydraulic direct-driven cylinders made on high standard.
- 4 three-stages arms are suitable for more vehicles.
- 3/8" aircraft quality cable is used for synchronization.
- Single-point safety release, allow technician to disengage both column simultaneously.
- Self-lubricating UHMW Polyethylene sliders and bronze bush.
- Clear-floor design, provide unobstructed floor use.
- Overhead safety shut-off device prevents vehicle damage.
- Stackable rubber pads and 1.5",2.5",5"adapters as standard supply.
- Standard adjustable heights accommodates varying ceiling heights.
- Standard door guards.
- Standard toe guards on lifting arms.

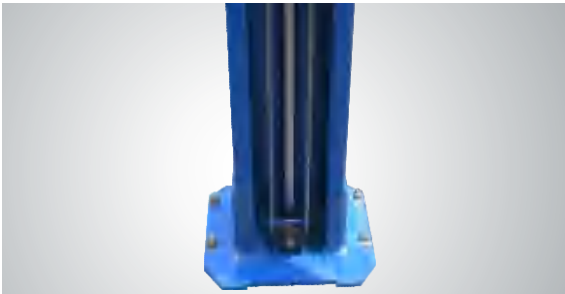


ADVANCE LINE OF TWO POST LIFTS

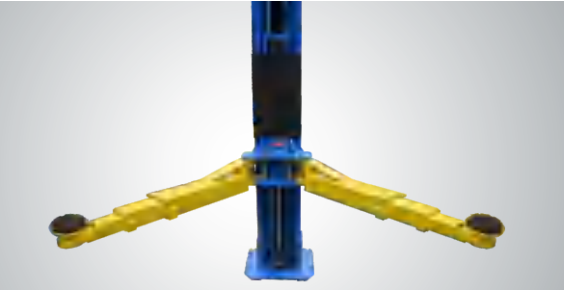
Model 209C,209CH is our another one of advance line two post lif...Clear floor, more flexible with and high adjustment, advance features.



▲ Single-Point Safety Release
The Single-point safety release makes it easy for the operator to unlock both columns locks from one column, and more reliable !



▲ Hydraulic Direct-driven Cylinders
The hydraulic direct-driven cylinders feature more efficient,more longevity, more reliable and less service.



▲ 4 three-stages arms are suitable for more vehicles. only 209C 209CH



▲ The stackable rubber pads assembly with 1.5", 2.5",5" extension adapters



▲ Optional Width Extension Kits
With these kits the width between posts is adjusted from 2850mm to 3000mm.
Kits No.:20906 (209C)
Kits No.:20907 (209CH)



▲ Exclusive Feature
Optional Hight Extension Kits
with these kits the overall height is adjusted from 3821mm(150 1/2''") to 4431mm(174 1/2").
only 209C,Kits No.:20902

SPECIFICATIONS

Model	Style	Lifting Capacity	Lifting Time	A	B	C	D	E	F	Gross Weight	Motor
				Lifting Height	Overall Height	Overall Width	Drive-Thru Clearance	Width Between Columns	Minimum Pad Height		
209C	Clearfloor Direct-driven	4.0T (9,000 lbs.)	57 Seconds	1815-2044mm (71 1/2" - 80 1/2")	3621/3821mm (142 1/2"/150 1/2")	3428mm (135")	2528mm (99 1/2")	2850mm (112 1/4")	90mm (3 1/2")	695kg (1,532lbs)	3.0HP
209CH	Clearfloor Direct-driven	4.0T (9,000 lbs.)	57 Seconds	1815-2044mm (71 1/2" - 80 1/2")	4231/4431mm (166 1/2"/174 1/2")	3428mm (135")	2528mm (99 1/2")	2850mm (112 1/4")	90mm (3 1/2")	722kg (1,592lbs)	3.0HP