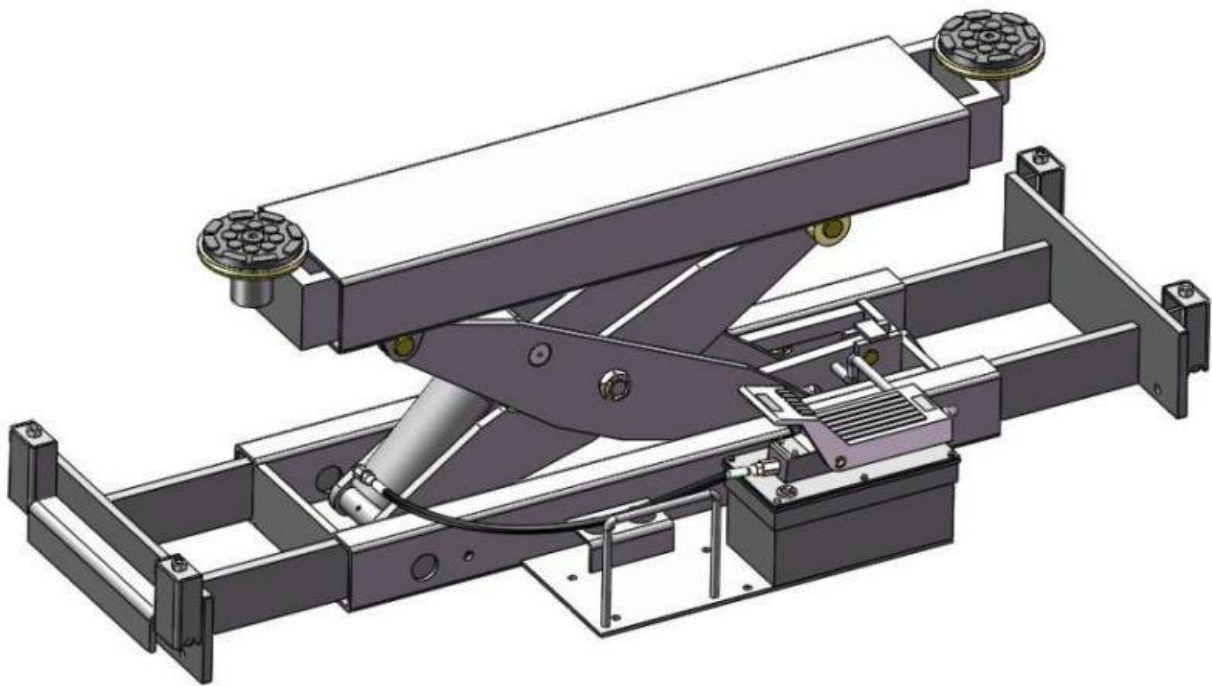




Original



Installation And Service Manual



RJ-10A

Jack

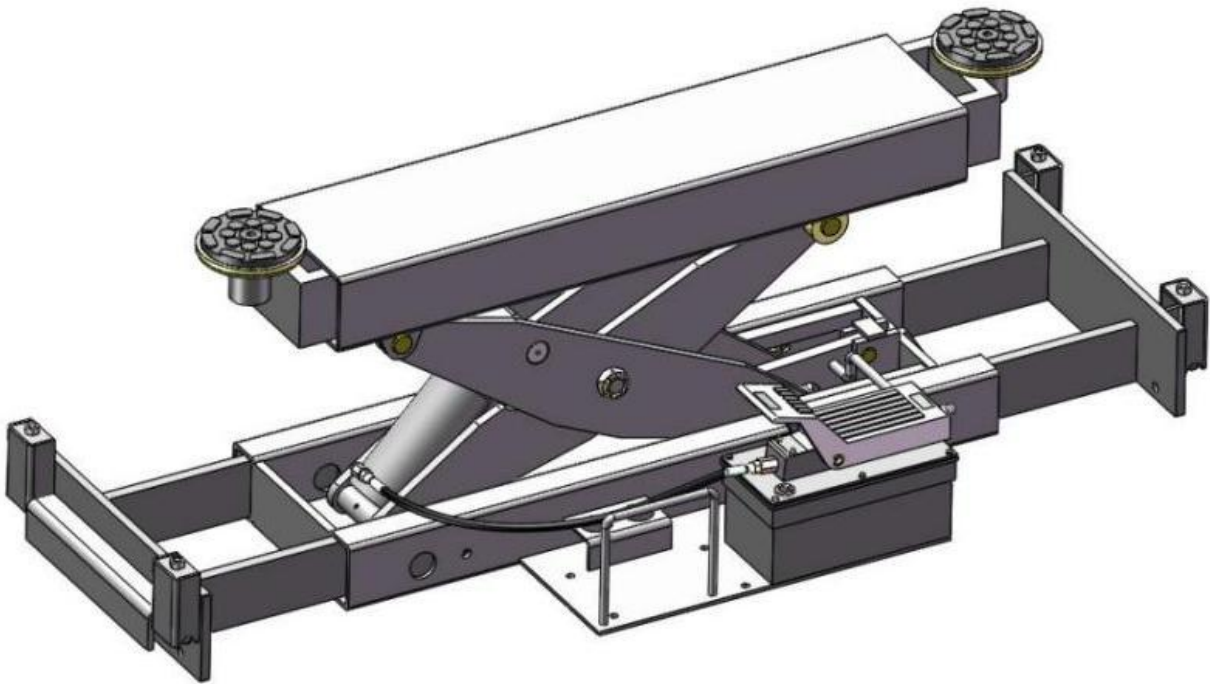
Model: RJ-10A

CONTENTS

Product Features and Specifications	1
Storage and Installation.....	3
Installation procedure.....	3
Operation Instruction.....	5
Maintenance schedule.....	8
Trouble Shooting	9
EXPLODED VIEW	10
Car lift safety tips	13
Lift Disposal	13

I. FEATURE AND SPECIFICATIONS

- Safety mechanism lock.
- Easy operation: RJ-10A equipped with pneumatic pump activated by air.
- Can be used separately or work with four post lifts and large scissors lifts.
- Adjustable 1.5", 2.5" ,5"extension adapters & Rubber Pads assy.



RJ-10A

Fig.1

Measurement Image

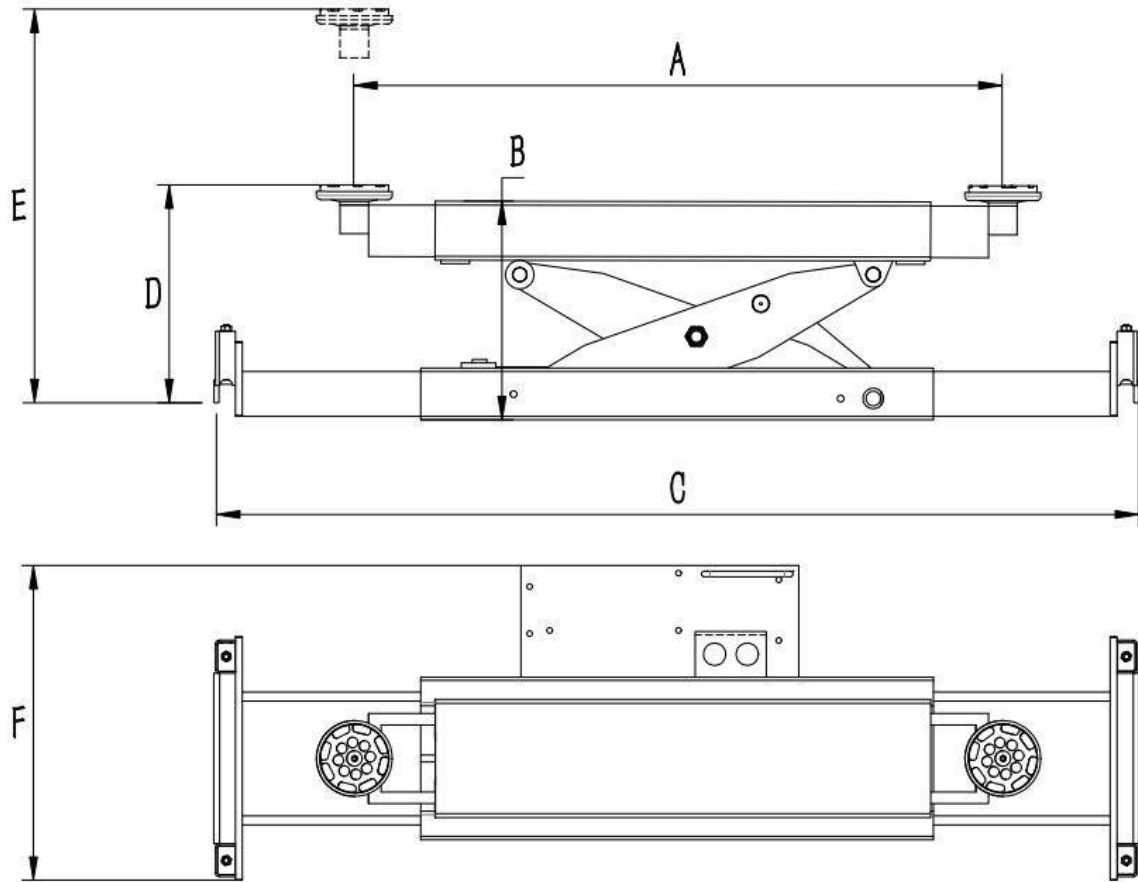


Fig.2

Specifications

Model	Lifting capacity	Lifting time	A	B	C	D	E		F	Air Pressure	Pump
			Arm Pads Reach	Min. Height	Support Base Width	Min. rubber pad Height	Max. Lifting Height (Without adapters)	Max. Lifting Height (With adapters)	Overall Width		
RJ-10A	4,500kg (10,000lbs)	50s	980-1684 mm (38 5/8"-66 1/4")	270mm (10 5/8")	980-1435 mm (38 5/8"-56 1/2")	273mm (10 3/4 ")	550mm (21 5/8")	779mm (30 5/8")	550mm 21 5/8"	0.8Mpa	Pneumatic Pump

II.Storage and Installation

1. Requirements.

- 1.1. The equipment shall be stored in a dry, mildew-free, non-flammable environment;
- 1.2. The equipment is only approved for installation and be used indoor,do not installation outdoor.
- 1.3. In order to avoid equipment damaged, it is the responsibility of operator to read and follow instructions to take in safety precautions before installation.
- 1.4. Do not install the equipment outdoor if that area is few protective measures.
- 1.5. Carefully inspect the Jack and certain all parts are in place and running correctly after completed installation.
- 1.6. Ensure that only authorized personnel operate. All installation and maintenance must be performed by an authorized and qualified Technicians. Do not make any modifications to the equipment.

2. Jack shall be removed and transportation by forklift or lifting equipment..

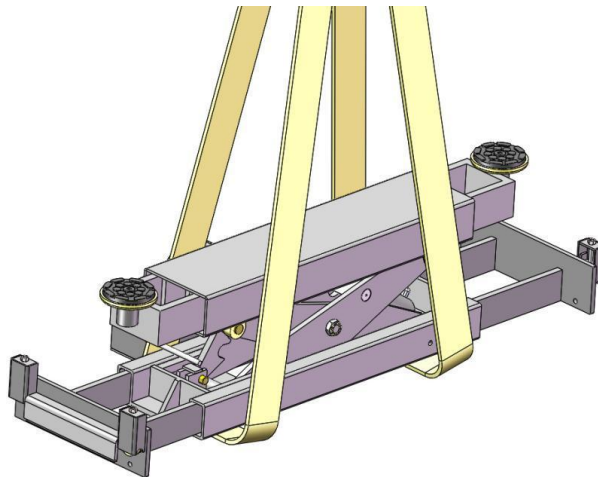


Fig.3

3. Air source requirements

The air source pressure must be above 0.8MPa

III.Installation procedure

1. Check the parts before assembly, confirm all the parts are completed.

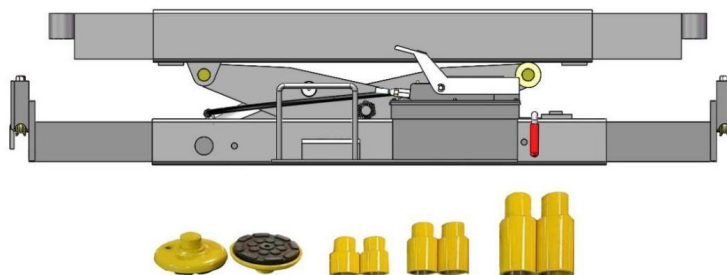


Fig.4

2. Equipment installation

2.1 Make sure the 4-post lift and large scissor lift is fully lowered and the safety lock is locked.

2.2 Using the Hoist crane, forklift or other lifting equipment to lift the Rolling Jack above and between the Lift's two platforms.

2.3 According to the distance between the two platforms to adjust the Extendable Bases, make the Rollers are correctly on the rails of two platforms.

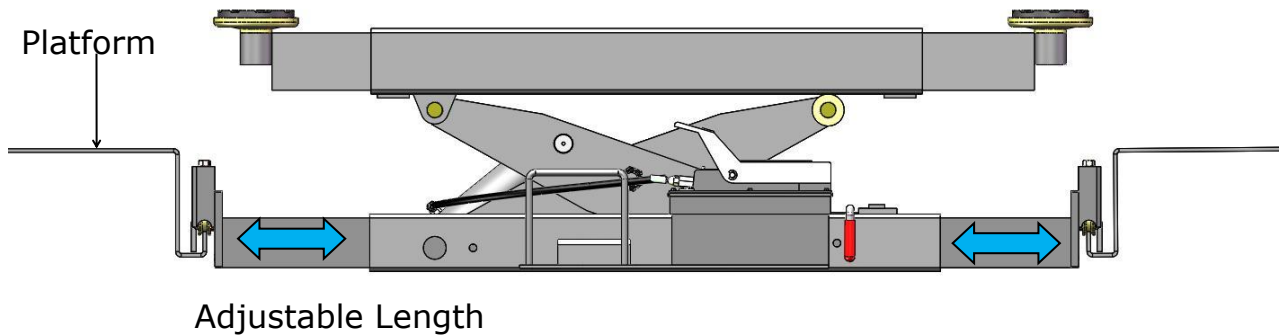


Fig.5

3. Connecting air source

After Rolling Jack is correctly installed and adjusted. Attaching an air source to the pneumatic pump by their fittings.

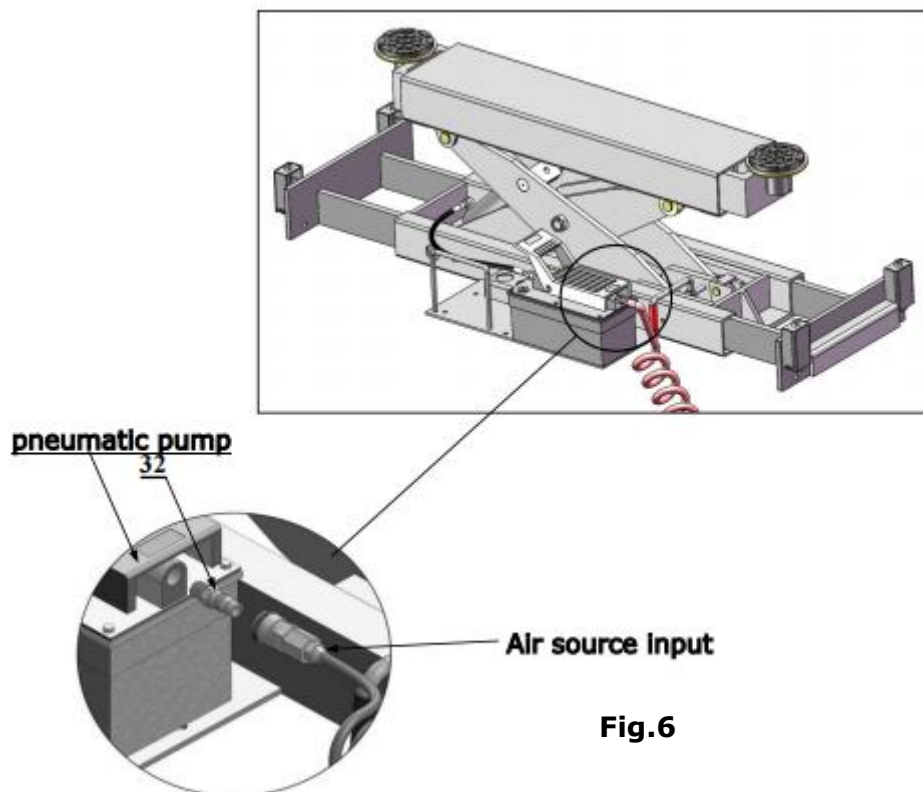


Fig.6

IV. Operation instruction

1. Preparation before use:

- 1.1 Make sure the 4-post lift and large scissor lift is fully lowered and the safety lock is locked.
- 1.2 Air source provides power to start the Jack. Need to prepare the air source in advance.
- 1.3 The Oil-water separator must be installed on the air source device before using, otherwise the pump would be damaged.
- 1.4 The Pneumatic Pump comes from the factory is full of Hydraulic Oil. You do not need to add any at this point, unless the oil has leaked out.

2. Operation of RJ-10A

2.1 Operating instructions for pneumatic pump

Loosen the exhaust nut approximately one turn counterclockwise before starting normal operation(it was tightened for shipment).

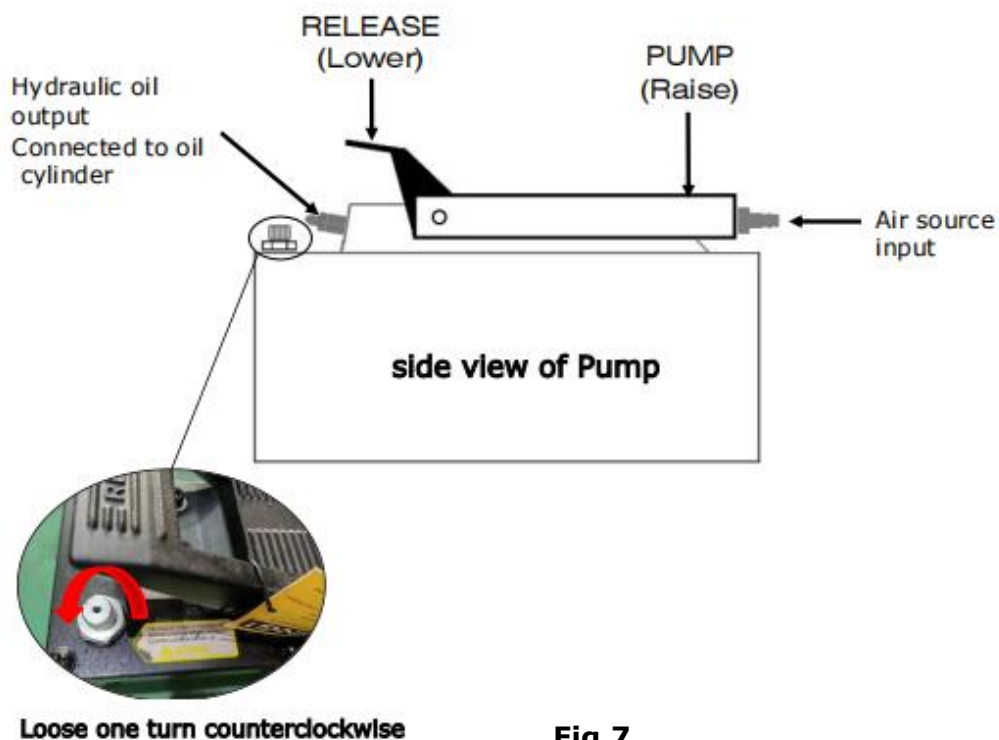



Fig.7

 **Warning:** Make sure that the Rolling Jack is on the completely lowest position and the rubber pads are removed before a Vehicle drove on or drove off the lift, to prevent the vehicle would hit its chassis.

2.2 Lifting operation of RJ-10A

A. Position the Adjustable Arms of the Rolling Jack to make the arm pads underneath the Vehicle's recommended lifting points.

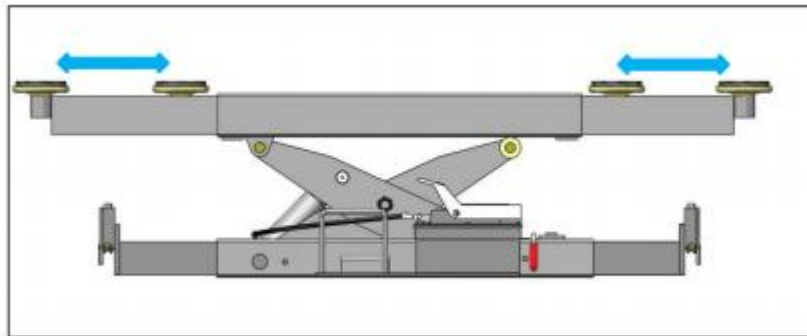


Fig.8

B. Press 'PUMP' showed in Fig 7 to fill air into the oil pump and the Rolling Jack is raised.

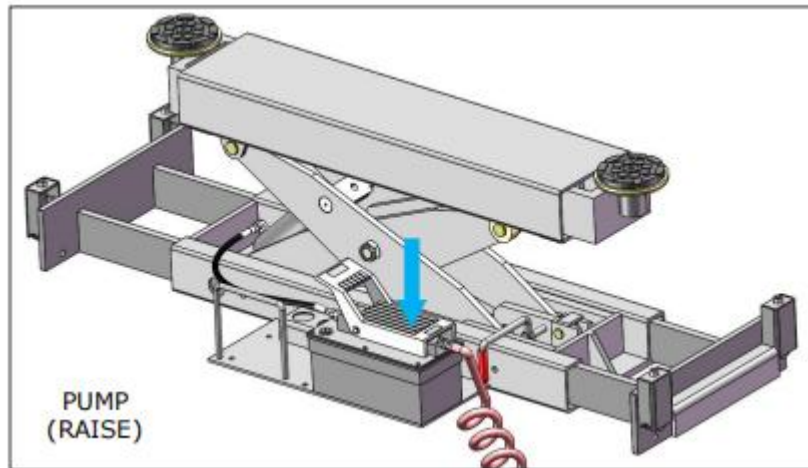


Fig.9

C. When the Rolling Jack raises to a suitable work height, press 'RELEASE' showed in Fig7 until the nearest Safety Lock is engaged. Make sure the safety lock is locked before processing work.

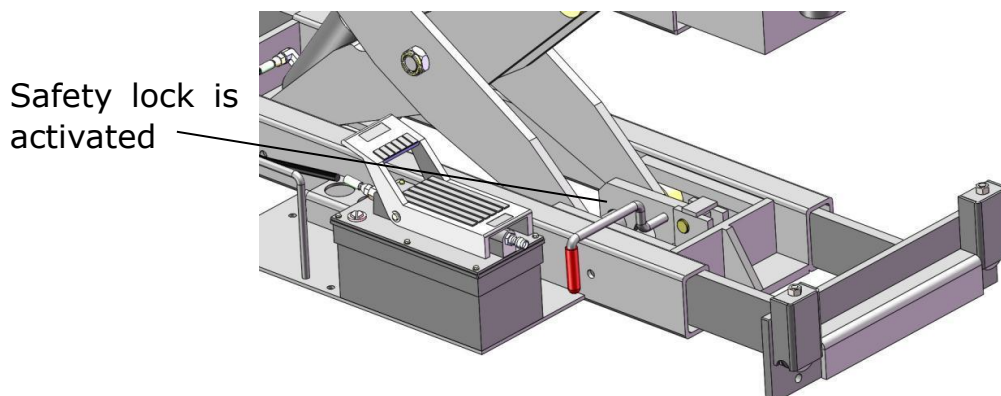


Fig.10

2.3 Descending operation of RJ-10A

A. Press 'PUMP' showed in Fig 7 to raise the Jack for few seconds till the safety lock device is released.

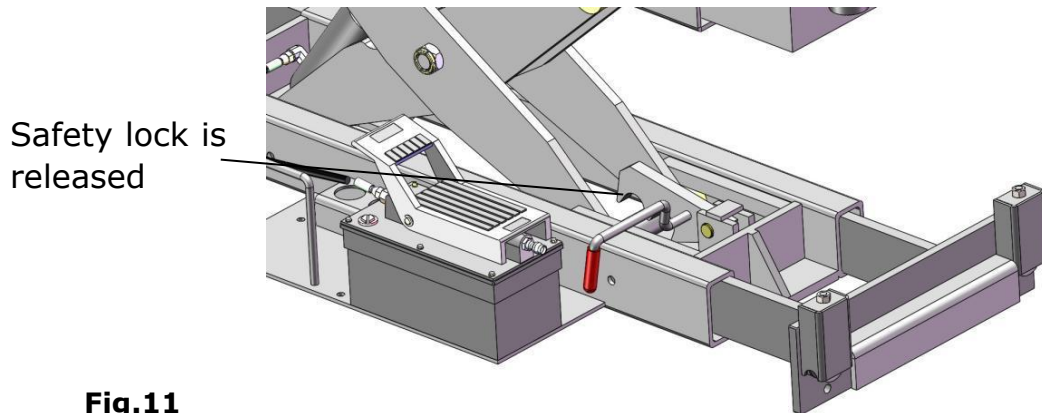


Fig.11

B. Press 'RELEASE' of the pump with one hand while other hand turn up the safety lock handle.

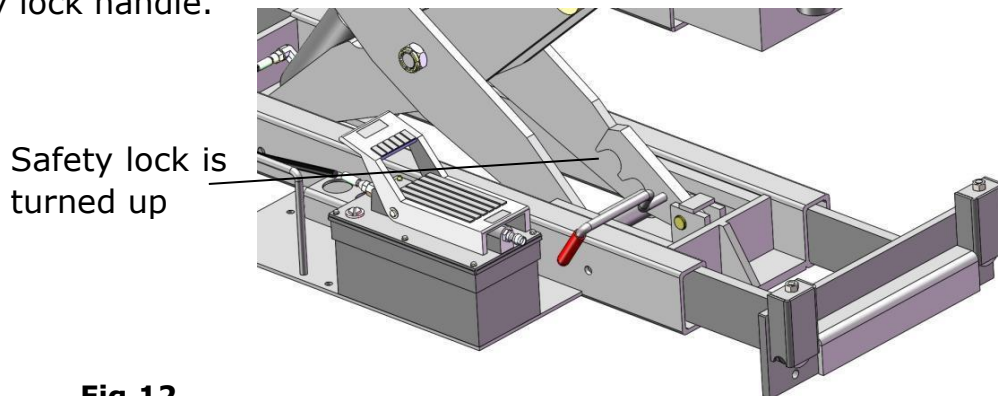


Fig.12

C. Reset the pedal to Horizontal position after the Jack is fully lowered.

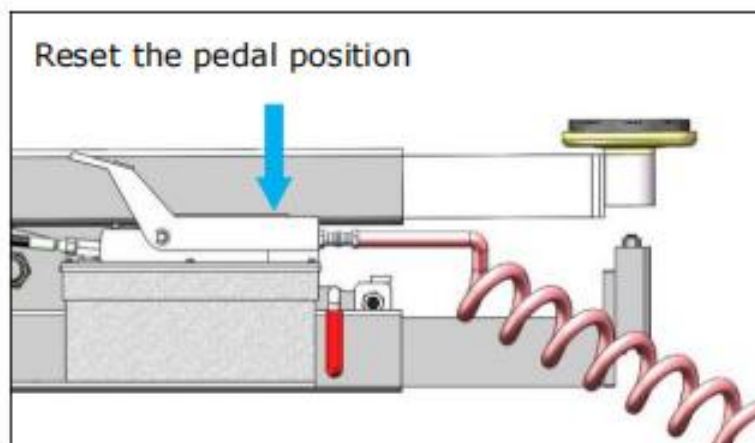


Fig.13

Warning: Move away your hand and anywhere of body from the scissor of the Jack while the Jack is lifting and lowering, in order to prevent injury accidentally.

V. MAINTENANCE SCHEDULE

Keep the Rolling Jack clean; wipe up any oil spills. Do not let dirt get into the hydraulic system.

1. Daily:

- Make a visual inspection of all moving parts and check for damage or excessive wear. Replace any damaged or worn parts before setting the Jack back into service.
- Ensure that safety locks are in good working status. Do not use your Rolling Jack if the safety lock are damaged, over-worn, or out of place.
- Inspect rubber pads for damage or excessive wear.

2. Weekly:

- Lubricate all rollers and connecting pin with oil or WD-40.
- Check all oil hose connections, bolts, and pins to ensure no abnormalities.
- Check the cylinder connection bolt (tighten the bolt if necessary).

3. Monthly:

- Check the hydraulic oil of the pneumatic hydraulic pump, and refill it if required
- Add grease to running friction parts for lubrication and maintenance.

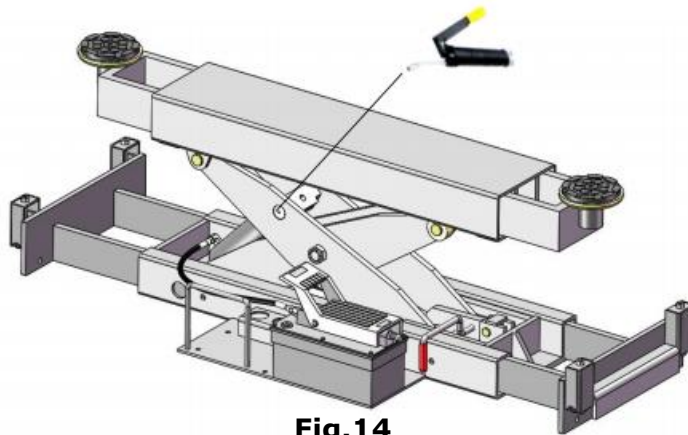


Fig.14

4. To maintenance Hydraulic Oil

A. Replace the hydraulic oil every 350 hours. The oil change period should be appropriately shortened, if used in a dirty environment;

B. Remove the tank cover when changing oil, to throw out the deteriorated and dirty hydraulic oil, and then put the pump body and the tank into a clean container with clean diesel or kerosene for washing, and finally dry it with compressed air. Reassemble the tank with good quality, cleanly 32# hydraulic oil.

C. Waste hydraulic oil used by the equipment can not be thrown into regular

trash or dumped into the environment. It pollutes the environment and is illegal. Instead, take it to a recycling center. Used/dirty hydraulic oil can be cleaned and re-used.

VI. TROUBLE SHOOTING

TROUBLE	CAUSE	REMEDY
Jack raises slowly or descent slowly	<ol style="list-style-type: none"> 1. Low pressure 2. Low oil level 3. Oil line leakage 4. Dirty hydraulic oil 5. Oil line is jammed 6. Overload lifting 	<ol style="list-style-type: none"> 1. Recheck air pressure 0.8Mpa 2. Fill in the tank 3. Check the oil connection and the fittings are tighten 4. Check the oil, replace and clean hydraulic system 5. Clean the oil line 6. Check load
Jack does not moved	<ol style="list-style-type: none"> 1. Roller pin worn or damaged 2. Roller not on right position 3. Roller is stuck 	<ol style="list-style-type: none"> 1. Repair or replace 2. Adjust the roller position 3. Repair or replace roller connecting U-shaped bracket
Lift does not stay up	<ol style="list-style-type: none"> 1. Oil line leakage 2. Dirty hydraulic oil 3. Cylinder leaks 4. Spring of pedal for reset release is stuck 	<ol style="list-style-type: none"> 1. Check the oil connection and tighten the fittings 2. Check the oil, replace and clean hydraulic system 3. Replace oil cylinder seal 4. Repair or replace
Lift cannot lower	<ol style="list-style-type: none"> 1. Safety device are engaged 2. The "RELEASE" button of the pedal is not pressed 	<ol style="list-style-type: none"> 1. Re-operate 2. Re-operate

VII. EXPLODED VIEW

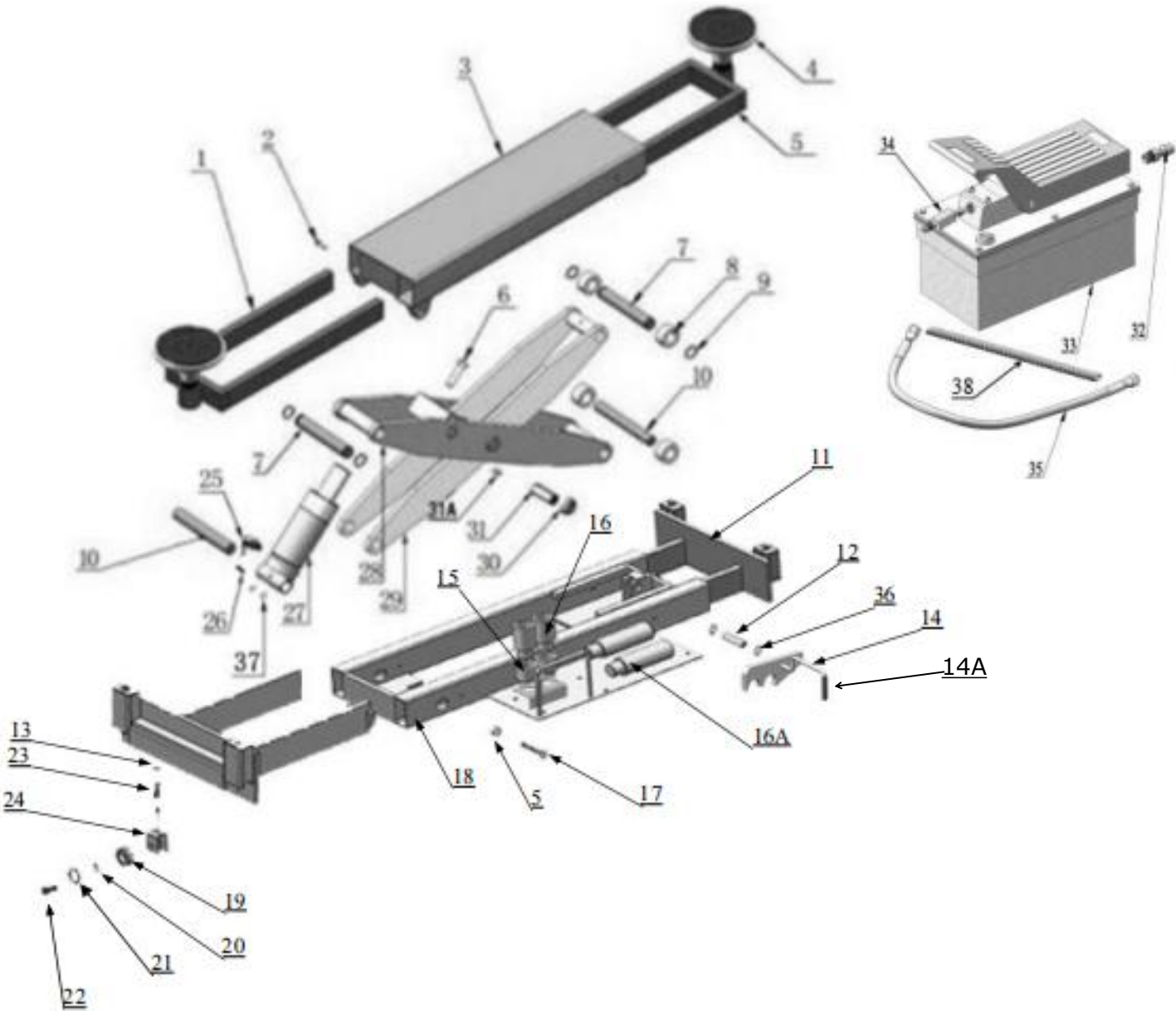


Fig.15

PARTS LIST

Item	Part No.	Description	QTY
1	11760607	Extendable arm frame Assembly	2
2	10201022	Hex Bolt M8*16	2
3	11760608	Upper support Assembly	1
4	11680030C	Rubber Pad Assembly	2
5	10209021	Hex Nut M10	2
6	10680055	Hex Bolt M12*70	1
7	11680008	Pin for upper roller	2
8	11680009	Upper roller	4
9	10206032	Clip Ring Φ25	4
10	11680011	Pin for lower roller	2
11	11760623-03	Lower sliding frame Assembly	2
12	11680076	Pin for safety lock device	1
13	10209056	Self Locking Nut M10	4
14	11760622-01	Safety Lock device	1
14A	10206003A	Safety handle red sleeve	1
15	11209051B	Stackable extension adapter 1.5"	2
16	11209052B	Stackable extension adapter 2.5"	2
16A	11209053B	Stackable extension adapter 5"	2
17	10690019	Hex Bolt M10*50	2
18	11760610-01	Base frame weldment	1
19	11680016	Pulley	4
20	10680031	Bearing	4
21	10680010	Limit Ring Φ32	4
22	1105074005	Shaft for pulley	4
23	1005084001	Spring	4
24	1105074004A	Pulley bracket assembly	4
25	10420097	90° fitting for cylinder	1
26	10420005	Socket Set screw M5*8	1
27	10680021	Cylinder	1
28	11680608	Outer Scissors	1
29	11680607	Inner Scissors	1
30	10620022	Self Locking Nut M24	2
31	11680078	Scissor Pin for main Connecting	2
31A	10620064	Greasing Fitting	2
32	10420146	Straight fitting for Air Line	1
33	10670002	Pneumatic Pump	1
34	10420119	Straight Fitting 3/8NPT*1/4JIC(M)	1
35	10680084	Oil Hose 1/4*405mm	1
36	10206019	Clip Ring Φ19	2
37	10620064	Washer Φ6	2
38	1005034001-01	Wave tube φ25.5*φ20*550	1

CYLINDER (10680021)

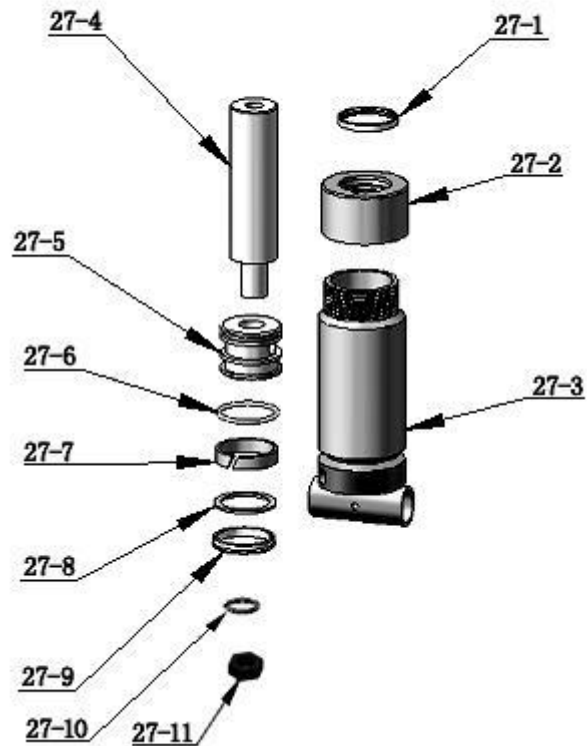


Fig.20

PARTS FOR HYDRAULIC CYLINDER

Item	Part No.	Description	QTY	Item	Part No.	Description	QTY
27-1	10209078	Dust Ring $\Phi 38*\Phi 46*5$	1	27-7	10201029	Support Ring	1
27-2	11670006	Head Cap	1	27-8	10201030	Y Ring	1
27-3	11670007	Bore Weldment	1	27-9	10201030A	Support Ring $\Phi 53*\Phi 63*3$	1
27-4	11670008	Piston Rod	1	27-10	10206069	O Ring $\Phi 21*3.1$	1
27-5	11670009	Piston	1	27-11	10206071	Hex Bolt M20*2	1
27-6	10201031	O Ring	1				

VIII. Car lift safety tips

Put this safety tips in a place where you can always alert the operator. Please reference to the lift manufacturer's manual for specific information about the lift.

1. Check the lift daily. If the machine breaks down or has damaged parts, do not operate, and use the parts of original equipment to repair.
2. Do not overload the lift. The rated weight of the manufacturer design is indicated on the label of the lift.
3. Position control of the vehicle and operation of the lift can only be done by a trained and authorized person.
4. You can not lift a car with people inside. When the lift is working, the customer or other people should not be around the machine.
5. Keep the place around the lift without obstacles, lubricants, grease, garbage and other debris for a long time.
6. Carefully drive the car onto the lift, and the lift should raise to the required height for operation. **Note**, if you are working under a car, raise the lift high enough and make sure the safety mechanism has locked the machine.
7. Note, removing(or installing) parts from a car can cause a sudden shift of gravity that unstable the raised car. Reference to the car manufacturer's service manual as a recommended procedure when removing parts from the car.
8. Before the lift drops, make sure that the tool tray, tool rack, etc. are removed under the car.

IX. Lift disposal.

When the car lift cannot meet the requirements for normal use and needs to be disposed, it should follow local laws and regulations.

